

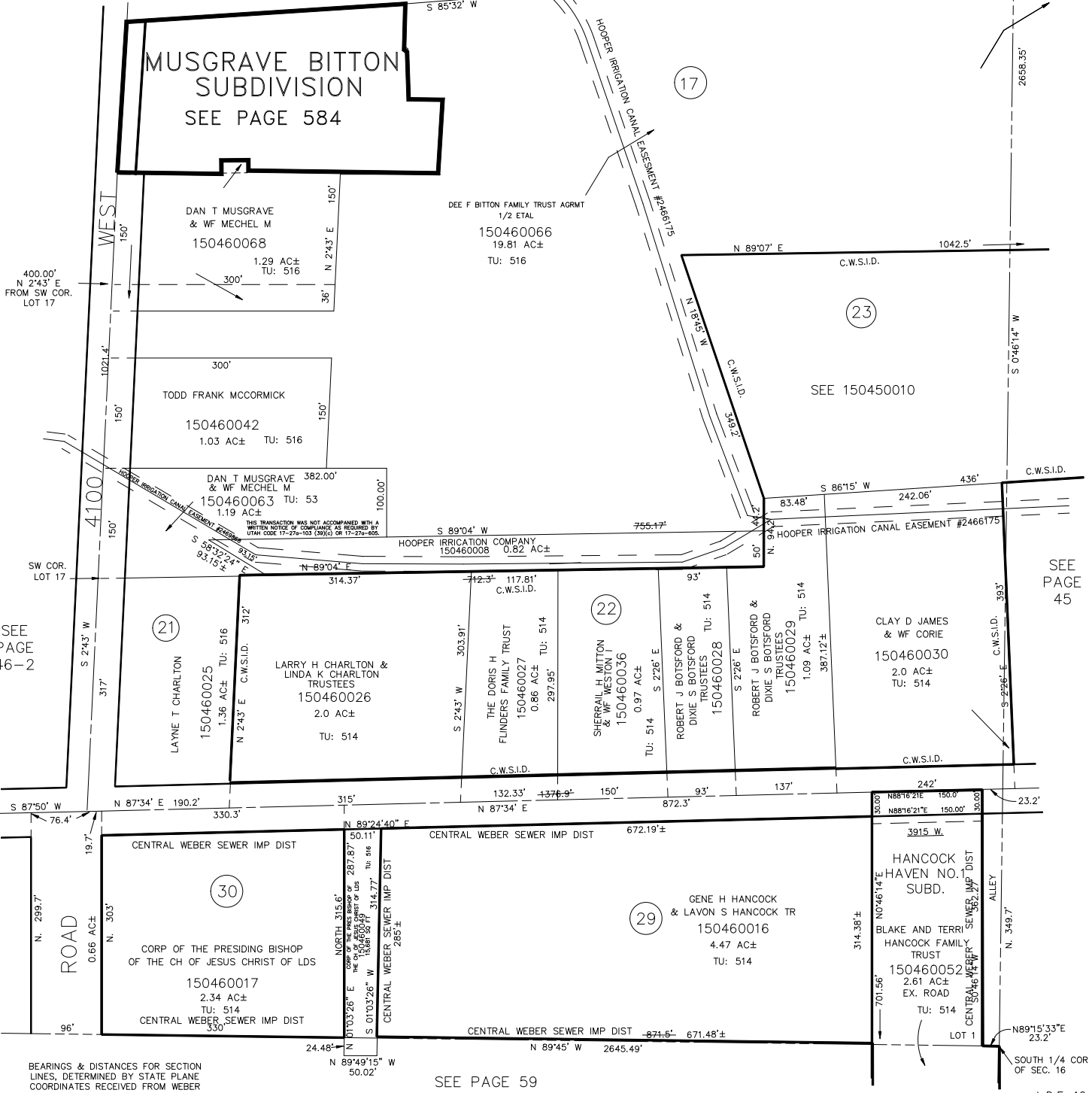
PART OF S.W. 1/4  
SECTION 16, T.6N., R.2W., S.L.B. & M.

IN WEBER COUNTY

TAXING UNIT: 53, 377, 514

SCALE 1" = 100'

SEE PAGE 46



MUSGRAVE BITTON  
SUBDIVISION  
SEE PAGE 584

DAN T MUSGRAVE  
& WF MECHEL M  
150460068  
1.29 AC±  
TU: 516

DEE F BITTON FAMILY TRUST AGRMT  
1/2 ETAL  
150460066  
19.81 AC±  
TU: 516

TODD FRANK MCCORMICK  
150460042  
1.03 AC± TU: 516

DAN T MUSGRAVE & WF MECHEL M  
150460063 TU: 53  
1.19 AC±

HOOPER IRRIGATION COMPANY  
150460008 0.82 AC±

21

LAYNE T CHARLTON  
150460025  
1.36 AC± TU: 516

LARRY H CHARLTON &  
LINDA K CHARLTON  
TRUSTEES  
150460026  
2.0 AC±  
TU: 514

THE DORIS H  
FLINDERS FAMILY TRUST  
150460027  
0.86 AC± TU: 514  
297.95'

22

SHERRAIL H MITTON  
& WF WESTON J  
150460036  
0.97 AC±  
TU: 514

ROBERT J BOTSFORD &  
DIXIE S BOTSFORD  
TRUSTEES TU: 514  
150460028

ROBERT J BOTSFORD &  
DIXIE S BOTSFORD  
TRUSTEES  
150460029  
1.09 AC± TU: 514  
397.12±

CLAY D JAMES  
& WF CORIE  
150460030  
2.0 AC±  
TU: 514

30

CENTRAL WEBER SEWER IMP DIST  
CORP OF THE PRESIDING BISHOP  
OF THE CH OF JESUS CHRIST OF LDS  
150460017  
2.34 AC±  
TU: 514  
CENTRAL WEBER SEWER IMP DIST

CENTRAL WEBER SEWER IMP DIST  
NORTH 315.6'  
CORP OF THE PRESIDING BISHOP  
OF THE CH OF JESUS CHRIST OF LDS  
150460018  
15.04± AC±  
TU: 516  
CENTRAL WEBER SEWER IMP DIST

29

GENE H HANCOCK  
& LAVON S HANCOCK TR  
150460016  
4.47 AC±  
TU: 514

HANCOCK  
HAVEN NO. 1  
SUBD.  
BLAKE AND TERRI  
HANCOCK FAMILY  
TRUST  
150460052  
2.61 AC±  
EX. ROAD  
TU: 514

BEARINGS & DISTANCES FOR SECTION  
LINES, DETERMINED BY STATE PLANE  
COORDINATES RECEIVED FROM WEBER  
COUNTY SURVEYORS OFFICE.

SEE PAGE 59

L.D.F. 12-91